



## Authorized Channel Partner





**Type** : Cement Screw Conveyors, Tubular Screw Conveyors, Vertical Screw Conveyors, Trough Screw Conveyors, Shaftless Spiral Conveyors, Stainless Steel Screw Conveyors, Micro Batch Feeders

**Size** : 114 mm ø shaft dia to 660 mm ø Shaft dia

**Capacity** : 1.8 kg/hr to 110 TPH

**Materials** : Mild Steel, Stainless Steel, PU Coating

## Dust Collecting System

**Type** : Silo Venting Filters, Flange Round Dust Collectors, Cement Weigh Hopper Venting Filters, Ground Mounted Dust Collectors, Fume Extraction Cum Dust Collectors

**Surface Area** : 0.5 m<sup>2</sup> to 70 m<sup>2</sup>

**Air Volume** : 29 cfm to 3830 cfm

**Filter Material** : Polyplate, Elliptical Bag, Round Bag, Cartridge



## Valves



**Type** : Butterfly Valves, Rotary Valves, Ball Segment Valves, Diverter Valves, Slide Gate Valves, Pinch Valves, Actuated Valves

**Size** : 4 inch to 40 inch

**Capacity** : 2 Litres to 80 Litres per Revolution

**Materials** : Aluminium Die Casted, Carbon Steel, Stainless Steel, SINT- Lined



- Type** : Rotary Level Indicators, Vibrating Level Limit switches, Pressure Relief Valves, Silo Safety System, Differential Pressure Meters & Gauges
- Connections** : G1 1/2", Ga 1/4", G2 1/2"
- Enclosure** : IP 65, IP 66
- Electrical Data** : 115V / 230V, 50-80 Hz or 24V / 48V, 50-60 Hz or 24V DC
- Applications** : Silo Safety System for Cement, Fly Ash, Plastic, Powder & Granuals

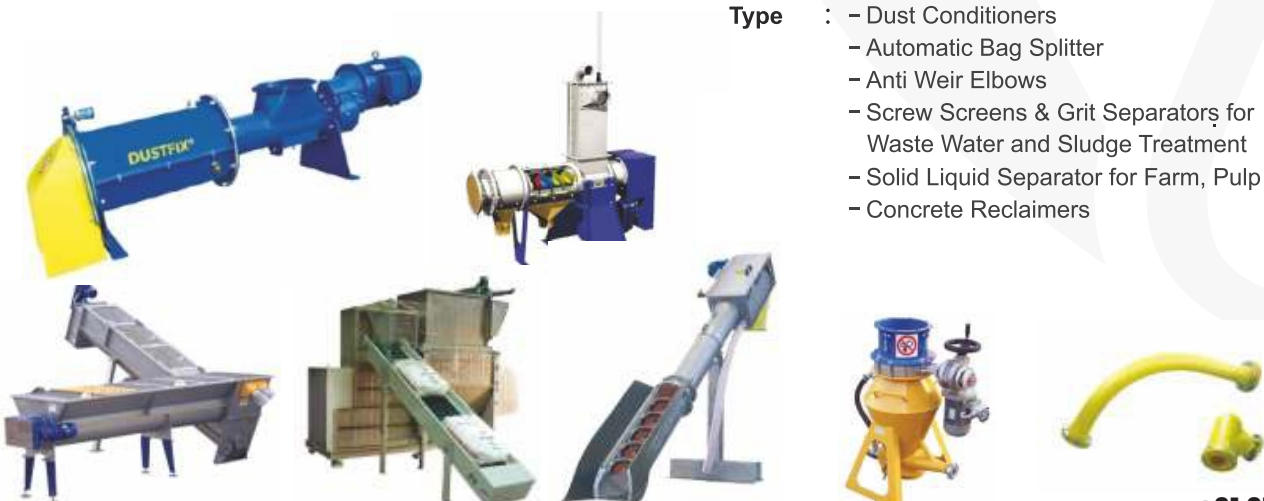
## Bulk Solid Discharging & Mixing Equipment

- Type** :
- Single and Twin Shaft Screw
  - Bin Activators
  - Lump Breakers
  - Conical & Laboratory Mixers
  - Waste Bag Compactor
  - Jumbo Bag Loading & Unloading System
  - Loading Bellows
  - Micro – Batch Screw Feeders
  - Loss in Weight Screw Feeder



## Additional Solutions

- Type** :
- Dust Conditioners
  - Automatic Bag Splitter
  - Anti Weir Elbows
  - Screw Screens & Grit Separators for Waste Water and Sludge Treatment
  - Solid Liquid Separator for Farm, Pulp & Agro Food
  - Concrete Reclaimers





## Electrical Vibrators



- Type** : Electrical Vibrating Motors, Flange Mounted Vibrating Motors, High Frequency Vibrators, Shutter Vibrators
- Centrifugal Force** : 0-26,000 kg
- Applications** : Silos, Hoppers, Dispensers, Agitators, Mixers, Filter Cleaning, Vibrating Screens, Feeders and Tables
- Features** : Suitable for Indoor and Outdoor Use. Silos and Hoppers of any Material and Capacity from 200 to 10,000 kg, Atex II2D T100°C
- Benefits** : Economical, Wide Range, Special Windings for Different Geographical Areas, Adjustable Force
- Certifications** : ATEX, IP-66, EX II2D/3D, NEMA4, Flameproof



## Pneumatic Vibrations & Aeration Pads

- Type** : External Pneumatic Vibrators, Pneumatic Hammers, Air Cannons, Vibrating Bin Aerators
- Applications** : Silos, Hoppers, Pipes, Dry Bulk Tank Trailers, Dry Bulk Rail Tankers, Vibrating Feeders, Tables and Channels
- Media** : Dry, Fine Powders, Cement, Lime, Pigments, Plastics, Starch, Flour, Sugar, Coffee, Wood Fibres, Paper, Plastics, Detergents, Fertilizers, Clay
- Benefits** : Economical, Low Air Consumption, Efficient, Zero Impact on Silo Structure, Multi-Voltage, Integrated Solenoid Valve, Timer



## High Frequency Vibrators

- Needle Diameters(ø)** : 38mm ,50mm ,59mm, 65mm
- Force** : 125 kg to 740 kg
- Features** : Equipped with 10 Meters Electric Cable and 5 Meters Internally Reinforced Working Hose, Thermal Protection, IP 68 Head Protection Class, Exclusive Sealing System, Hardening Treatment & Chrome Plating
- Converters** :  
 - Input Voltage 230 V - 50 Hz Single Phase or 400 V - 50 Hz Three Phase Output 42 V at 200 Hz Three Phase  
 - Available in 2 Models Single Phase and in 3 Models Three Phase  
 - Mechanically Fixed Magnets  
 - Overload Protection  
 - Available with 1,2 and 3 Outlets Depending on the Model





- Type** : Single Point Load Cells, Bending and Shear Beam Load Cells, S-Type Load Cells
- Capacity** : 5 kg to 1000 TON
- Certifications** : OMIL, IP66, IP68, IP69K, ATEX Certification, C3 Approval
- Features** : Surge Protection, Lightning Protection, Parylene Coating, 05 Years Warranty
- Applications** : Silos, Weigh Feeders, Belt Weighers, Big Bag(FIBC) Filling/Emptying Equipment, Check Weighers, Multihead Weighers and Roto Packers



## Weighing Assemblies & Instrumentation



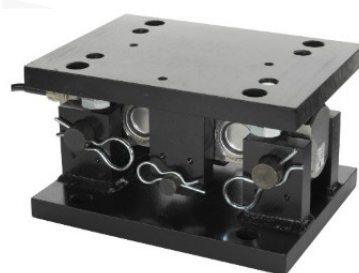
**Capacity** : 5 kg to 1000 TON

**Materials** : Stainless Steel Rocker Column Load Cell in Analogue and Digital Mount, Zinc Plated Mount

**Certifications** : OMIL C4 Approved and NTEP Class IIIL, IP68, IP69k, ATEX, Inbuilt Lightning Protection

**Junction Box** : Real Time Monitoring of Signals upto 08 Load Cells

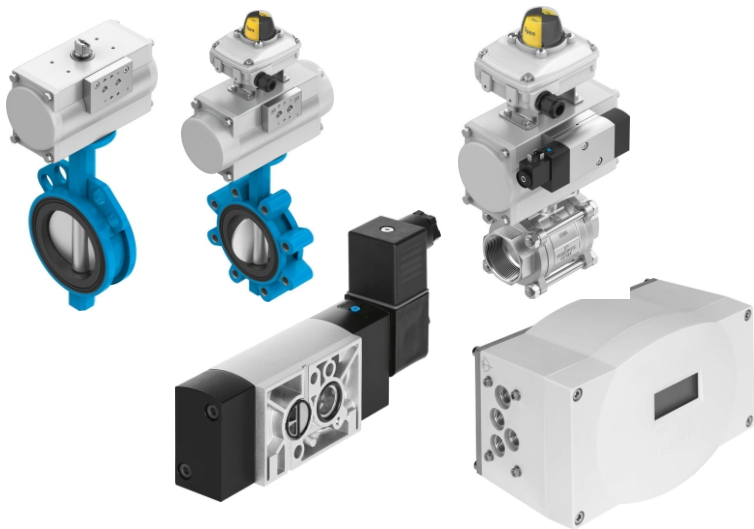
**Indicator** : DIN Rail and Panel Mounted High Speed Indicator and Weight Transmitter



- Pneumatic Cylinders
- Electric & pneumatic valves for every application area
- Air Preparation Combination Units:
- Festo Vacuum Technology



## Process Automation

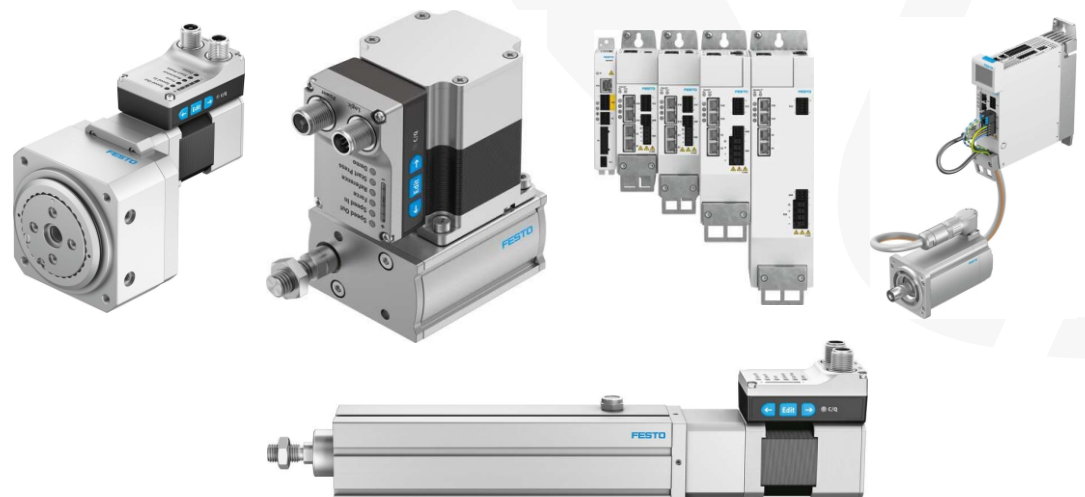


### Quarter Turn Actuator DTPD

- Uniform torque characteristic across the entire rotation angle of 90° with the double-acting version
- Version with swivel angle 120°, 135°, 180° for the sizes 40, 120, 240, 480, double-acting
- Process valve connection to ISO 5211
- Mounting hole pattern to VDI/VDE 3845
- Sturdy, non-slip and easy-to-clean aluminium housing
- Long service life, low wear
- Increased corrosion protection

## Electrical Automation

- Electric Cylinder Unit EPCS
- Servo Drive CMMT-AS
- Rotary Drive Unit ERMS



- Product Range** :
- Ø 32 – 300 mm as per ISO & VDMA
  - Ø 12 – 100 mm. Compact/ Non Rotating / Guided Cylinders
  - Rotary Actuators
  - Grippers
  - Rodless Cylinders



## Solenoid Valves & Air Preparation System



- Product Range** :
- 2/2, 3/2, 5/2, 5/3 – Single / Double Solenoid Valve
  - Size – 1/8", 1/4", 3/8", 1/2": up to 3
  - Coil Voltage – 220v, 110v, 48v, 24v, 12v, AC/DC.
  - Guarantees More Than 200 Million Cycles
  - Namur / Non Namur Type
- Certifications** :
- ATEX, Ex, SIL Certification, CCOE, MRE
  - Enclosure Options Available with WeatherProof, Flame/ Explosion Proof to Gas Group IIA/IIB or IIC, ATEX & SIL Certified

## Self Actuated Pressure Control Valves



- Brands** : FISHER, FRANCEL, TARTARINI, JEON, TESCO
- Type** : Self Actuated Pressure Control Valve (SAPCV), Direct Operated Regulators, Back-Pressure Regulators, Pilot Operated Regulators, Slam Shut off Valves,
- Size** : 1/4" to 12"
- Pressure Range** : Upto 30,000 PSIG/2068 Bar
- Temperature** : -51 to 343 deg C
- Materials** : Ductile Iron, Cast Steel, Stainless Steel, Monel, Hastelloy
- Applications** : Oil & Gas, Petrochemical, Food & Beverage, Chemicals, Pharmaceuticals, Semiconductors







## Floting Type

: Ball Valves –Full and Reduce Bore  
Size : DN8 to DN300, Metal Seated  
Size : DN10-DN100

**Multi –Port Ball Valve** : L,T and 4 port Size DN15-DN300 / 150- 600 CLASS

## Trunnion Type

: Ball Valves –Full and Reduce Bore  
Size : DN40 to DN600, Metal Seated  
Size : DN50-DN400

**Jacketed Type** : Full or Partial Jacketed / Class 150 -1500,  
Fully welded : DN25-DN 600 / 150-1500 Class

**Cavity Filled** : DN15-DN25 / 150-600 Class Material : PTFE, TFM

**V –Notch Ball Valve** : DN20 to DN 200 / 150 to 600 Class

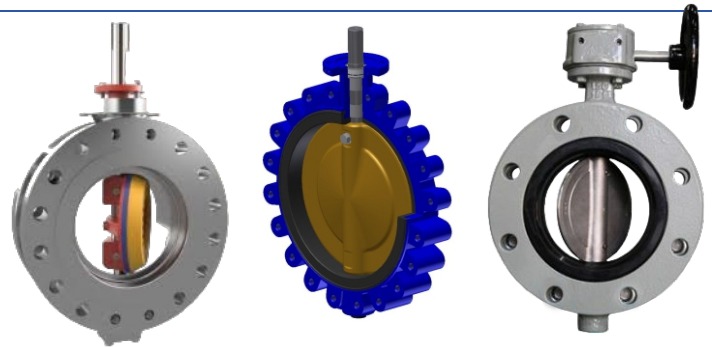
**Tank Bottom Ball Valves** : DN25-DN200 / 150-600 Class, Flanged, Wafer type

**Segmented Ball Valves ( Rotary Ball Plug)** : DN25-DN300/150 AND 300 Class

## PHBB High Performance Butterfly Valve

**Size** : DN50-DN750 / Class : 150,300,600

Double offset , Tripal Offset & Centric design with Wafer, Lug & double flanged Type with bi-directional sealing



## PHBB Valve Automation System



PHBB offers wide range of automated valve solutions with electrical, hydraulic & pneumatic actuators, Limit switch box, Solenoid valve, Air Filter regulator, Air lock relay & variety of accessories.

### Manufacturing Standards :

**Design Standards** : ISO 17292, API6D, ASME B16.34, ASMEB16.10, EN 12516-1 & 2 , API608

**Ends** : ASME B16.5, ASMEB16.11, ASME B16.25, API 1.20.1, EN 1759, ISO 228, EN1092-1 & 3.

**Fire Safe** : API 607,ISO 10497, API 6FA

**Testing** : API 598, EN 12266-1, ISO 5208, ANSI FCI 70-2, API 6D, ISO 5848 -1 & 2

### Certifications :

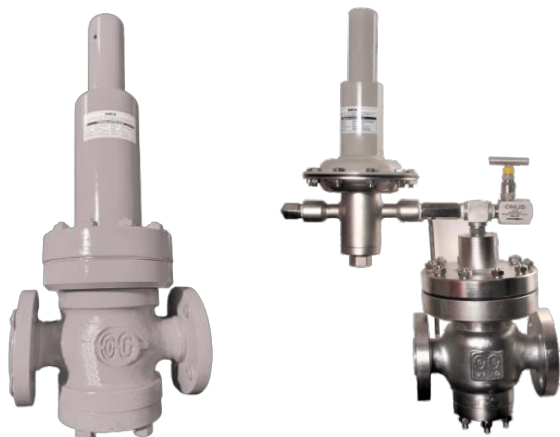
Certified with ISO 9001-2015, API spec Q1, ISO 14001, ISO 45001 & our products are available with API 6D, PED/CE, ATEX EIL & SIL certification.

### Customers :

International & Domestic customers viz. Bechtel – USA, VME & Siemens – Singapore, Frames process– Netherlands, London Marine consultants–UK, Reliance Industries – Jamnagar, BG-Shell – India, Tata Projects (for ONGC), Deccan Fine Chemicals, Solvay, Jubilant life science, Navin Fluorine, Atlas Copco etc.

**+91 97129 63084**

**www.systemautomation.co.in**



**Trim** : Stainless Steel 316L ( For CS/SS304/SS316/ SS304L/ SS316L BODY) Hastelloy 'C' ( For CS/SS Body ,Monel, \ HAC Body)

**End Connection** : Flanged / Screwed End

### Pressure Control Valves

- Direct Operated Pressure Control Valve
- Pilot Operated Pressure Control Valve
- Blanketing Pressure Regulator
- Iso Certifide Pressure Reducing Station

### Technical Specification :

**Size** : 15 -125 NB

**Inlet Pressure Range** : 0-250 bars

**Flow Range** : 0 - 10,000 Nm<sup>3</sup>/Hr

**Set Pressure Range** : 0-85 Kg/cm<sup>2</sup>

**Body** : Stainless Steel (304/316/304L/316L), Carbon Steel , Monel Hastelloy 'C'

## Safety Relief Valves

### Spring Loaded Safety Valves

#### Back Pressure Relief Valve

### Technical Specification :

**Size** : 15 -250 NB

**Body** : Stainless Steel ( 304/316/304L/316L), Carbon Steel, Hastelloy 'C'

**Trim** : Stainless Steel 316L ( For CS/SS304/SS316/SS304L/SS316L Body) Hastelloy 'C' ( For CS/SS Body , HAC Body)

**Emergency Vent Valve** : 8 INCH TO 24 INCH

**Pressure Range** : 100 mmWC to 300 mmWC

**Body** : CS/SS304/304L/316/316L



## Breather Valve / Flame Arrestor

### Pipe Away Breather Valve

#### Breather Valve With Flame Arrestor

**Size** : 15NB - 250NB

**Body** : Carbon Steel, Stainless Steel , Hastelloy 'C'

#### End Of Line Flame Arrestor Inline Flame Arrestor

**Size** : 15NB - 400NB

**Body** : Carbon Steel, Stainless Steel , Hastelloy 'C'

**Certifications** : ISO 9001:2015 ,ISO 14001:2015 ,ISO 45001:2018

**Clientele** : Tata Power ,upl , The Linde Group, larsen & Toubro, due Point, bharat Petroleum, Ongc Etc.Point,bharat Petroleum, Ongc Etc.





A Back Pressure Regulator is a device that maintains a defined pressure upstream of itself (at its own inlet). When fluid pressure exceeds the set point the valve opens more to relieve the excess pressure.

**Size** : DN3-DN3000mm (1/8"-120")  
**Accuracy** :  $\pm 0.5\%$  of reading, velocity  $> 0.3$  m/s  
**Velocity** : 0.1-15 m/s  
**Signal Output** : 4-20 mA, pulse HART  
**Power Supply** : AC85-250V, DC20V-36V

## Flow meters Magnetic -Ultrasonic Type

**Fluids Measured** : Steam, Gases, and Liquids  
**Flow Range** : 30:1 turndown  
**Liquids** : 1.0 ft/s (0.3 m/s) Velocity Min. 30 ft/s (9.14 m/s) Velocity Max  
**Digital Communications** : HART, Modbus, Profibus DP, Foundation Fieldbus, BACnet, USB, RS-232 Hazardous  
**Area Approvals** : CE, cFmus, ATEX, PED, IECEx



## Pressure and Temperature Gages



**Accuracy** : CL 1.0  
**Dampening Liquid** : Dry, Fillable & Filled  
**Standard followed** : EN13190 & other National / International Standards  
**Contact Type** : Magnetic Snap Action & ATEX Inductive  
**No. of Contacts** : Contact Single, Double & Triple Contacts for ON / OFF action



**Dial Size** : 100mm, 125mm & 150mm  
**Ranges** : -100°C to 0... 50°C to 650°C  
**Stem Sizes** : 6.0mm, 6.35mm, 8.0mm, 9.5mm, 10mm & 12.0mm  
**Mounting** : Bottom, Back & Every Angle with mounting bracket accessories  
**Stem Mounting** : With Capillary & without Capillary



### With Pneumatic Actuators and Accessories

We Supply valves with pneumatic actuators fitted with accessories according to customer requirements.



### With Electric Actuators

We use electric actuators of leading manufacturers depending on installation requirements or customer suggestions.



### With Manual Drives

Our Product Portfolio Includes Manual Drivers used directly on control valves.



### Single-Ported Globe Control Valves type Z

**Nominal Size :** DN 15...250 | NPS 1/2" ...10"  
**Nominal Pressure :** PN 10...40 | CL150; CL300  
**Leakage Class :** IV, VI as per EN 60534-4  
**Materials :** Grey cast iron and ductile iron  
Carbon Steel & Stainless Steel



### Single-Ported Globe Control Valves Type Z1A & Z1B

**Nominal Size :** DN 15...400 | NPS 1/2" ...16"  
**Nominal Pressure :** PN 10...630 | CL150 ...CL2500  
**Leakage Class :** IV, V, VI as per EN 60534-4  
**Materials :** Carbon Steel, Alloy & Stainless Steel



### Three-Way Control Valves Type Z3

**Nominal Size :** DN 15...250 | NPS 1/2" ...10"  
**Nominal Pressure :** PN 10...400 | CL 150...CL2500  
**Leakage Class :** IV, VI as per EN 60534-4  
**Materials :** Grey Cast Iron & Ductile Iron  
Carbon Steel & Stainless



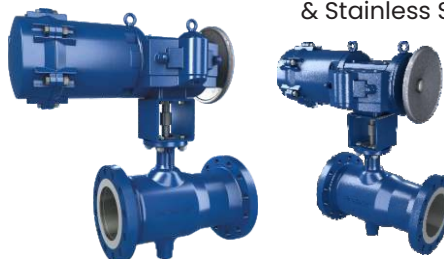
### Double-Ported Globe Control Valves Type Z10

**Nominal Size :** DN 15...300 | NPS 1/2" ...10"  
**Nominal Pressure :** PN 16...400 | CL150...CL900  
**Leakage Class :** II, VI as per EN 60534-4  
**Materials :** Carbon Steel, Alloy & Stainless Steel



### Rotary Plug Control Valves Type Z33

**Nominal Size :** DN 25...300 | NPS 1/2" ...10"  
**Nominal Pressure :** PN 10...40 | CL150 ...CL300  
**Leakage Class :** IV, VI as per EN 60534-4  
**Materials :** Carbon Steel, Alloy & Stainless Steel



### Diaphragm Multi-Spring Pneumatic Actuators Type P/R (Post Style) & Type PI/R1 (Yoke Style)

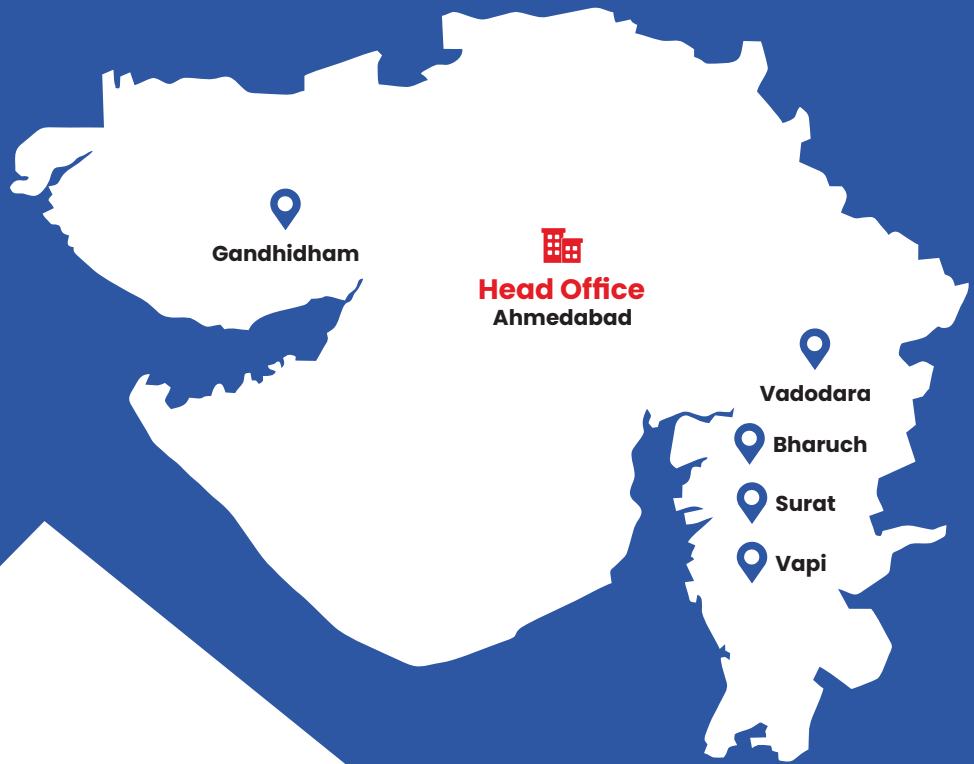
**Diaphragm Area :** 250...3000 CM<sup>2</sup>  
**Range OF Disposal**  
**Forces :** 0,5...90 kn  
**Handwheel:** Top-Mounted P/R, Side-Mounted PI/R1  
**Stroke:** 20,38,50,63,80,100,110 mm



+91 97129 63084

[www.systemautomation.co.in](http://www.systemautomation.co.in)

# Our Major Clients



 **SYSTEM AUTOMATION**



+91 97129 63084



[www.systemautomation.co.in](http://www.systemautomation.co.in)



[sales@systemautomation.co.in](mailto:sales@systemautomation.co.in)  
[ahd@systemautomation.co.in](mailto:ahd@systemautomation.co.in)  
[surat@systemautomation.co.in](mailto:surat@systemautomation.co.in)



21, Madhav Estate, B/h Safari Hotel, Opposite Girivar Pride, Odhav Circle, S. P. Ring Road, Odhav,  
Ahmedabad - 382 415 Gujarat, India.